

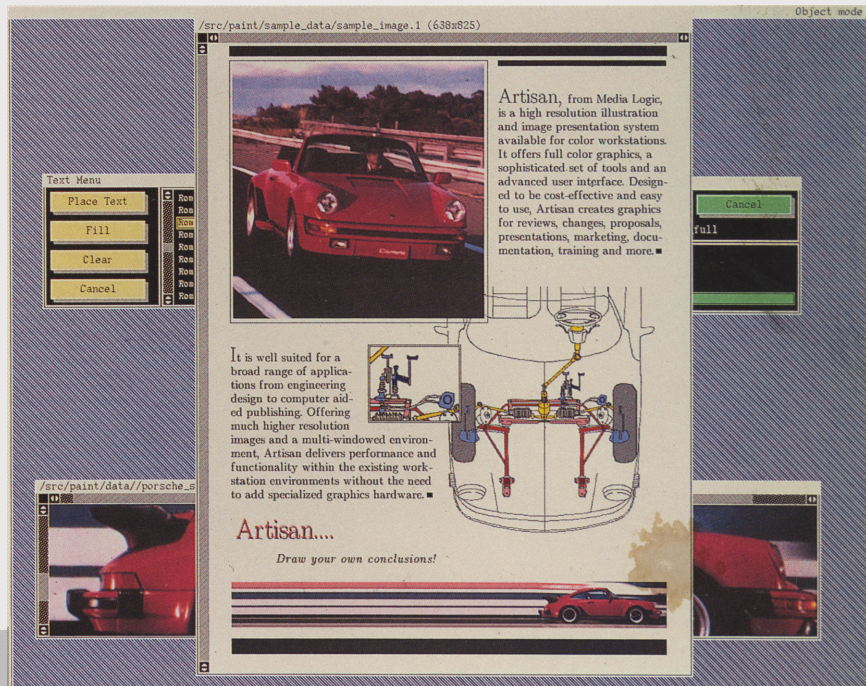
ARTISAN

A Full Color, High Resolution Paint and Illustration System

Artisan, from Media Logic Inc., is a high resolution paint, illustration, and desktop presentation system available for color workstations. This low cost software system offers full color graphics, a sophisticated set of tools, and an advanced user interface.

Now there is a low-cost way to create professional quality graphics for animation, design, business, engineering, marketing, publishing, and training applications. Artisan is the single solution to a multitude of graphic arts problems. Its multi-windowed, menu-driven interface lets you concentrate on results, not on using the program.

Artisan delivers performance and functionality from your workstation without the need to add any specialized graphics hardware.



Standard Features:

- Complete Software Solution
- 16.7 Million Simultaneous Colors
- Extensive Windowed Environment
- A Variety of Brush Types and Sizes
- Object Primitives, including Splines
- Antialiased Lines
- Solid and Gradient Color Fill
- Soft Area Flood
- Tinting, Color Shifting, and Gamma Correction
- Antialiased Text
- Multiple Image Compositing, including Partial Transparency
- Image Flip, Scale, and Rotation
- Image Zoom for Detail Work
- Alignment Guides and Rulers

Advanced User Interface



Windows, Brushes, and the Palette

Artisan makes extensive use of multiple, overlapping windows to enable painting in more than one image at a time. Even the menus are placed in windows that can be moved, hidden, or exposed at your command. Images larger than the screen are easily accommodated with Artisan's scrolling capabilities. These features help you make the most of your workstation's screen space.

Artisan's painting features go beyond the standard Airbrush, Blending Brush, and Geometric Object Brushes with an additional set of unique capabilities. The Hue Brush, for example, enables you to change the colors in an image without destroying its shadows or highlights. The Custom Brush lets you define an area of any image as a brush for quickly creating patterns or textures. With these brushes, and more, Artisan combines painting versatility with ease of use.

As a true 24 bit paint system, Artisan allows painting with any of over 16.7 million colors. Color transparency for all operations is always adjustable. You can match a color in any image and load it into the Palette Menu for later use. By reading and writing Palettes from files, you can fully customize your painting environment.

Lines, Objects, and Text

Antialiased lines can be drawn either freehand or ruler straight. Line color, width, sharpness, and opacity are completely under your control.

For perfectly proportioned shapes, Artisan provides a geometric library that includes circles, ellipses, elliptical arcs, rectangles, squares, equilateral and isosceles triangles, polygons with an arbitrary number of sides (closed and open, convex and concave), boxes with rounded corners, and splines. All objects can be positioned, scaled, rotated, and copied as desired.

Many of Artisan's functions use the objects you create to produce precisely defined results. For instance, you can create a single ellipse, fill it with red, draw its outline in black, and then add blue text inside it. Artisan's modular approach to graphics streamlines exacting processes into simple procedures.

Artisan's text facility consists of over 100 different font-size combinations, including antialiased fonts, bolds, and italics. Annotation and captioning functions include the ability to wrap text inside objects and to render the text in any color and opacity.

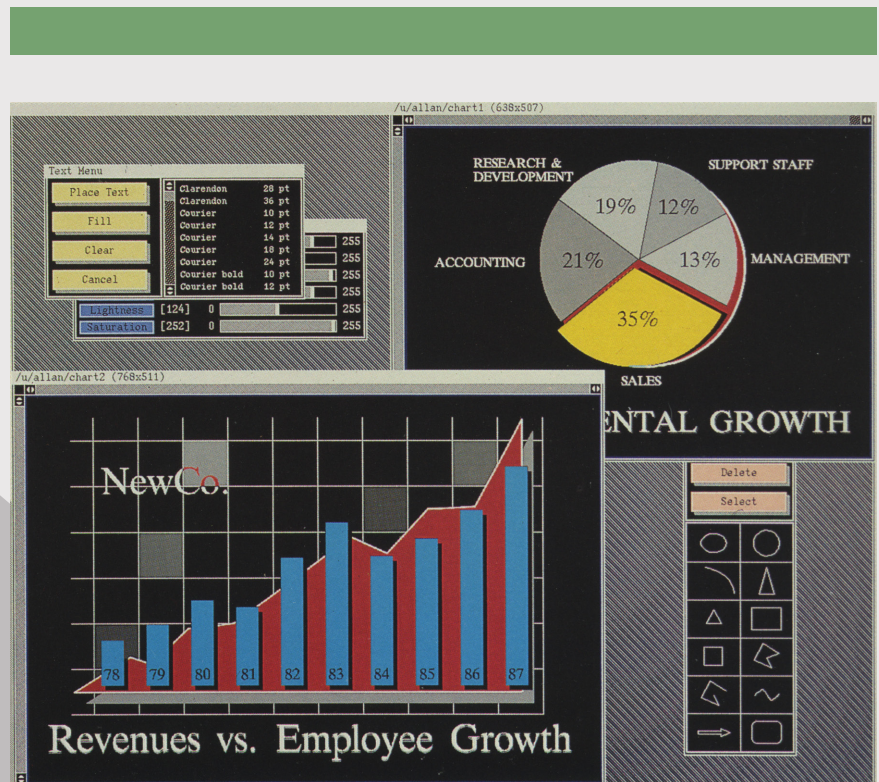
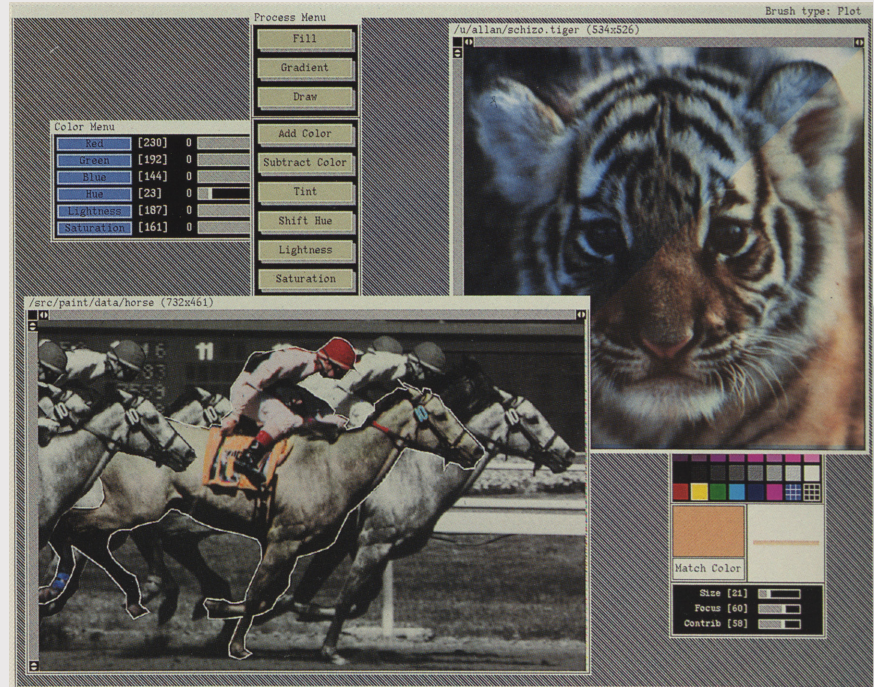


Image and Color Processing

Artisan provides the tools you need for color processing and image touch-up. Subtle or vivid color gradations can be achieved across an infinite number of directions using the Gradient Fill function. Entire images can be flipped, rotated, or scaled. The Gamma curve of any image area can be altered to compensate for input or output device non-linearities.

For color processing, Artisan lets you work in either RGB or HLS (Hue, Lightness, and Saturation) color spaces. By shifting down the lightness of an image area, for example, you can make that area appear as if it is in a shadow. You can increase the saturation to make the colors more vivid. Portions of images can be tinted, or colors can be added or subtracted in amounts you control. Artisan's Undo facility allows you to fix mistakes or try different effects for evaluation.

All of these operations work with any closed object that you define, including polygons and circles. Rectangles that surround the image can be used for processing on the entire canvas at once. For detailed work in smaller areas, many of these functions are available as brushes.

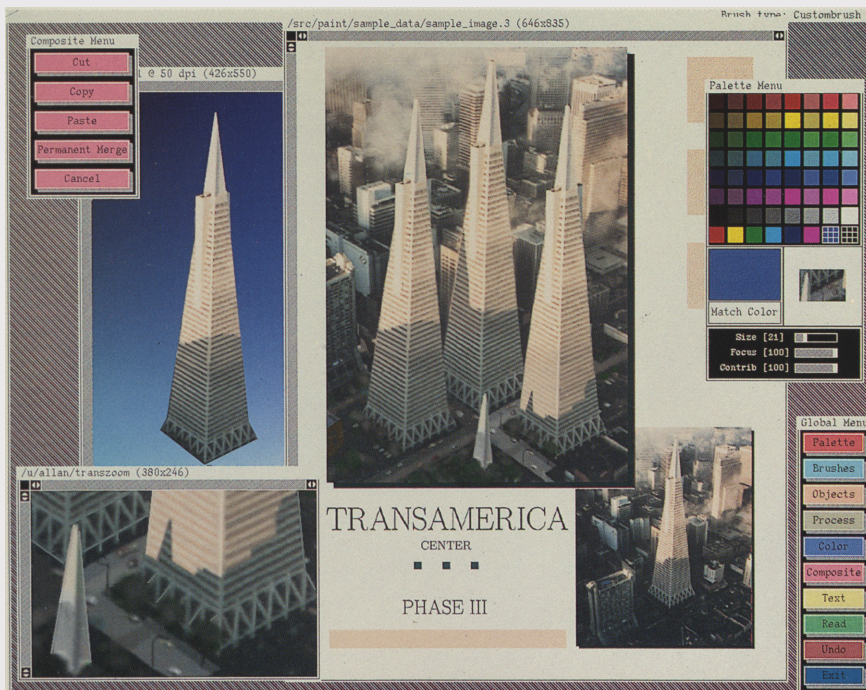


Compositing

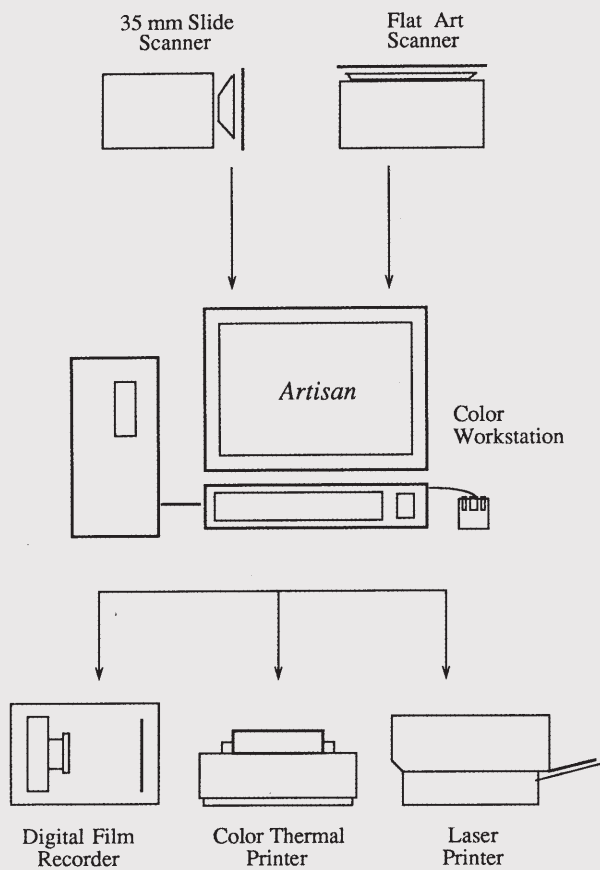
Unsurpassed flexibility for image compositing is ensured with Artisan's Cut, Copy, and Paste functions, with integrated scaling and rotational capabilities. Images, or portions of images, can be pasted onto one another as many times and in as many locations as desired.

Multiple image compositing is performed in a special preview environment, in which the size, placement, scale, and rotation of any cut or pasted image can be adjusted at will. After each adjustment, Artisan automatically performs a temporary merge of all paste images for your evaluation. You can add or delete images to the compositing stack at any time. At any time you can perform a permanent merge, taking advantage of Artisan's high quality image transformation and antialiasing capabilities. The flexibility of this previewing environment makes the fine tuning of image and page layouts quick and simple.

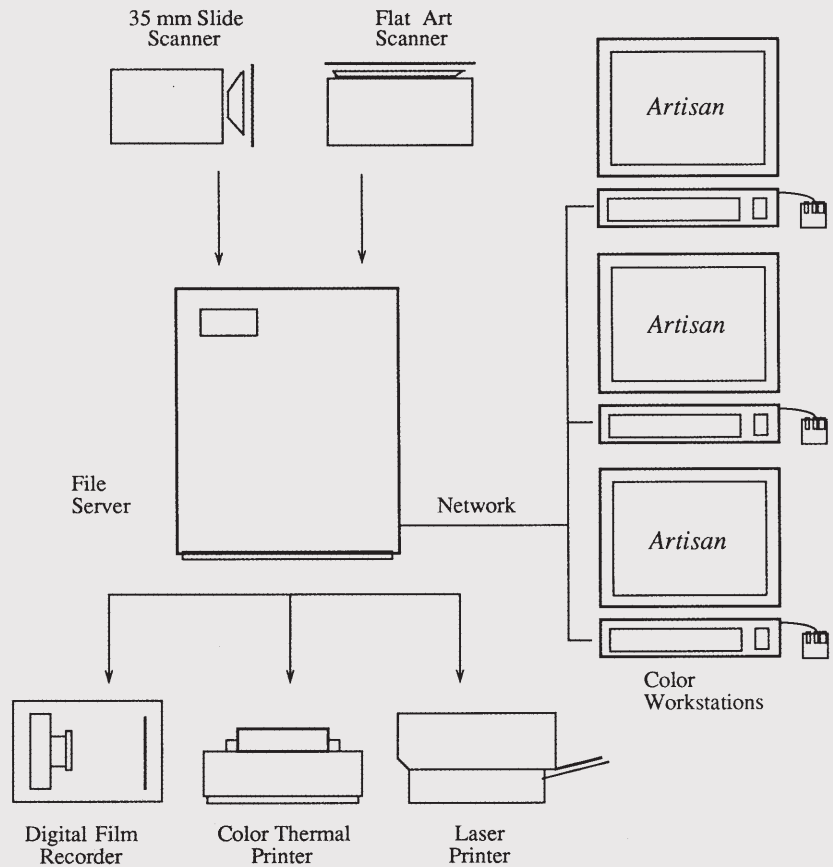
Artisan provides for a matte (alpha) channel to be defined for any image. This matte channel is utilized during compositing to achieve masking and partial transparency effects. You can paint into the matte with brushes or objects as easily as you can paint into the color channels.



Artisan works within your existing workstation environment



Standalone Configuration



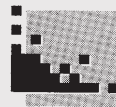
Networked Configuration

Whether you have a single standalone system or a network of many workstations, Artisan provides the features you need in a high resolution paint and illustration system. Since Artisan requires no additional hardware to run on your workstation, it is priced far below any competing system.

Even with all the features that Artisan offers, its usefulness depends on how well it integrates into your particular environment. That is why we designed Artisan to interface with popular scanners, film recorders, and color printers through optional device drivers and software. We supply format specifications, conversion utilities, and sample source code with every system to enable you to customize Artisan to fit your unique requirements. For desktop publishing and laser printer applications, Postscript® output conversion is also included.

If your workstation has only 8 bit display capabilities, Artisan can provide you with 24 bit color performance and functionality without the need to add graphics cards or additional monitors. Artisan's dynamic dithering process maintains the full color images in memory while displaying them in 8 bits on the screen without noticeable image degradation. All painting, image processing, and file operations are performed using 24 bits. Image resolutions as high as 4000 by 4000 lines, or more, ensure high quality results for any application.

Quality presentation graphics are no longer limited to expensive, customized systems. For more information or a demonstration, please call us.



Media Logic Incorporated
2501 Colorado Ave., Suite 350
Santa Monica, CA 90404
Tel. 213-453-7744
Fax. 213-453-9565